

---

---

**STORM WATER  
MANAGEMENT PROGRAM  
ANNUAL REPORT**



**PERMIT YEAR THREE**

March 10, 2005 – March 10, 2006

---

---

SUBMITTED IN ACCORDANCE WITH THE REQUIREMENTS OF  
NATIONAL POLLUTANT DISCHARGE ELIMINATION SYSTEM (NPDES)

**PERMIT NUMBER ALR040003**

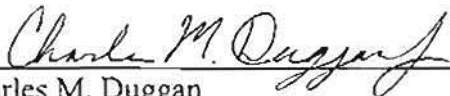
**CITY OF AUBURN**  
**NATIONAL POLLUTANT DISCHARGE ELIMINATION SYSTEMS (NPDES)**  
**PERMIT NUMBER ALR040003**  
**MUNICIPAL STORM WATER PROGRAM ANNUAL REPORT**

I certify under penalty of law that this document and all attachments were prepared under my direction or supervision in accordance with a system designed to assure that qualified personnel properly fathered and evaluated the information submitted. Based on my inquiry of the person or persons who manage the system, or those persons directly responsible for fathering the information submitted is, to the best of my knowledge and belief, true, accurate, and complete. I am aware that there are significant penalties for submitting false information including the possibility of fine and imprisonment for knowing violations.



---

Bill Ham, Jr.  
Mayor, City of Auburn  
144 Tichenor Avenue  
Auburn, Alabama 36830  
(334) 501-7260



---

Charles M. Duggan  
Acting City Manager, City of Auburn  
144 Tichenor Avenue  
Auburn, Alabama 36830  
(334) 501-7260

*February 27, 2006*

---

Date

---

# TABLE OF CONTENTS

---

I. INTRODUCTION.....	1
II. SITE DESCRIPTION .....	1
III. KNOWN OR SUSPECTED WATER QUALITY PROBLEMS.....	1
IV. RESPONSIBLE PARTY.....	2
V. STORM WATER MANAGEMENT PROGRAM COMPONENTS .....	3
VI. PUBLIC EDUCATION AND OUTREACH ON STORM WATER IMPACTS .....	4
A. <i>Articles in the City News Letter "Open Line": (March 2005 – Present)</i> .....	4
B. <i>Brochure Publications: (January 2005 – Present)</i> .....	4
C. <i>Web Site: (March 2005 – Present)</i> .....	5
D. <i>Video Presentations: (March 2005 – Present)</i> .....	5
E. <i>Public Presentations:</i> .....	6
F. <i>Work Shops Hosted:</i> .....	7
G. <i>Composting &amp; Recycling Center/Compost Demonstration Site</i> .....	8
H. <i>Stream Side Class Room Initiative: (April 2005)</i> .....	8
VII. PUBLIC INVOLVEMENT/PARTICIPATION .....	10
A. <i>Citizens Advisory Committee:</i> .....	10
B. <i>Watershed Organizations:</i> .....	10
C. <i>City of Auburn Earth Week 2005: (April 11-17)</i> .....	11
D. <i>Web Site hot line:</i> .....	12
E. <i>Arbor Day Tree Give Away: (February 2005, December 2005)</i> .....	12
F. <i>City of Auburn Citizen Survey: (August 2005)</i> .....	12
G. <i>News Paper Articles: (March 2005-Present)</i> .....	13
H. <i>Greenspace/Greenway Master Plan (December 2003)</i> .....	13
I. <i>Future Land Use Plan (2004)</i> .....	14
J. <i>Lee County Water Festival (May 2005)</i> .....	14



---

# TABLE OF CONTENTS

---

K.	<i>Conservation Easements 2005-Present</i> .....	15
VIII.	<b>ILLICIT DISCHARGE DETECTION AND ELIMINATION</b> .....	16
A.	<i>Storm Sewer Map</i> .....	16
B.	<i>Illicit Discharge Ordinance: (January 2004)</i> .....	16
C.	<i>Public Education on Illicit Discharges &amp; Improper Disposal: (March 2003 – present)</i> .....	17
D.	<i>Inspection of Drainage System: (2003-present)</i> .....	17
E.	<i>Detention Pond Inspections: (1997-present)</i> .....	17
F.	<i>Hazardous Waste Emergency Response Team</i> .....	18
G.	<i>Water Sampling Program (2004-present)</i> .....	18
IX.	<b>CONSTRUCTION SITE STORM WATER RUNOFF CONTROL</b> .....	19
A.	<i>Erosion and Sediment Control Ordinance (July 2002-present):</i> .....	19
B.	<i>Erosion Control Checklist (January 2003-present):</i> .....	19
C.	<i>Erosion Control Residential (January 2003-present):</i> .....	19
D.	<i>Added Elements to Erosion and Sediment Control (December 2004-present)</i> .....	20
E.	<i>Rainfall Data Collection (2005 - Present)</i> .....	20
X.	<b>POST-CONSTRUCTION STORM WATER MANAGEMENT IN NEW DEVELOPMENT AND REDEVELOPMENT</b> .....	21
A.	<i>Storm Water Management Manual (April 2003):</i> .....	21
B.	<i>Buffer Zones (July 2002)</i> .....	21
C.	<i>Detention Pond Inspections (1997-present)</i> .....	21
D.	<i>Right-of-Way Vegetation Program (2003-present)</i> .....	21
XI.	<b>POLLUTION PREVENTION/GOOD HOUSEKEEPING FOR MUNICIPAL OPERATIONS</b> .....	23
A.	<i>Construction Site Management Training (March 2005-present):</i> .....	23
B.	<i>Spill Response and Prevention Training (2004 – present):</i> .....	24
C.	<i>Risk Management Manual (March 2005 – present):</i> .....	24

---

# TABLE OF CONTENTS

---

<i>D. Municipal Operations Recycling (1998-present):</i> .....	24
<i>E. Street Sweeping</i> .....	25
<i>F. Alabama Certified Pesticides Applicator</i> .....	25
<b>XII. STORM WATER INFRASTRUCTURE IMPROVEMENTS</b> .....	26
<i>A. Storm Water Infrastructure Projects Completed (January 2005-present)</i> .....	26
<i>B. Storm Water Infrastructure Projects Under Construction</i> .....	26
<i>C. Storm Water Infrastructure Projects Under Design and Consideration:</i> .....	26
<b>XIII. PROGRAM EVALUATION</b> .....	28
<i>A. Strengths</i> .....	28
<i>B. Weaknesses</i> .....	29

---

# LIST OF APPENDICES

---

APPENDIX A	ALABAMA NOTICE OF INTENT
APPENDIX B	URBANIZED AREA MAP
APPENDIX C	NEWSPAPER PUBLICATIONS LISTING
APPENDIX D	GREEN SPACE AND GREEN WAY MASTER PLAN
APPENDIX E	FUTURE LAND USE PLAN
APPENDIX F	STREET SWEEPER MAP



# STORM WATER MANAGEMENT PROGRAM ANNUAL REPORT

PERMIT YEAR THREE

March 2005 - March 2006

---

## **I. INTRODUCTION**

In response to the National Pollutant Discharge Elimination System (NPDES) Phase II Storm Water Regulations, the City of Auburn applied for and received an NPDES permit for storm water discharges.

This report is being submitted to the Alabama Department of Environmental Management (ADEM) pursuant to Part V paragraph C of NPDES permit ALR 040003 issued on May 14, 2003.

This annual report is the third of five for the current permit period and covers the reporting period from March 2005 through March 2006. The program for the current permit period outlined in this report is patterned after the program submitted to and approved by ADEM in March 2003 in the City of Auburn's Alabama Notice of Intent (ALNOI) (Appendix A). The five year permit is expected to expire in March 2008.

## **II. SITE DESCRIPTION**

The City of Auburn is situated in East Central Alabama (Appendix B). The City limits encompass an area of approximately 49 square miles (31,180 acres). This area calculation does not include Auburn University property or the City of Opelika. The population of Auburn is approximately 43,000. There are approximately 56 miles of creeks and streams running through the City. In the 2003-2004 reporting year the storm drainage system contained approximately 86 miles of storm pipe with 4500 inlets and 3000 storm water manholes/junction boxes. The storm water inventory for the 2005-2006 reporting year has not been updated, as the City has hired a consultant who is currently performing a system-wide comprehensive update of the City's storm water system. An updated inventory should be complete by mid-2006 as a result of this comprehensive project.

## **III. KNOWN OR SUSPECTED WATER QUALITY PROBLEMS**

The City of Auburn discharges into four primary receiving waters, including Saughatchee Creek (North), Moores Mill Creek (South East), Chewacla Creek (South) and Parkersons Mill Creek (South West).

---

March 2005 - March 2006



---

Moore's Mill Creek was placed on the draft 303(d) list in 1998 and was listed on the final 2002 303(d) listing. Known water quality concerns within the jurisdictional area were identified as stream siltation resulting from sedimentation deriving from development.

The Saugahatchee Embayment where Saugahatchee Creek discharges into Yates Lake was placed on the State's 303(d) list in 1996, 1998, 2000 and 2002. The embayment was listed on the 303(d) list primarily for nutrient enrichment. It is also suspected that sedimentation should be a water quality concern near the embayment.

#### **IV. RESPONSIBLE PARTY**

The City of Auburn's storm water management program (SWMP) is composed of several programs operating under various departments within the City's organization. For example, the recycling and composting program is operated by the Environmental Services Department, the maintenance of infrastructure is performed by the Public Works Construction Maintenance Department, residential and commercial construction is monitored by the Codes and Enforcement Department as well as the Public Works Inspection Division and the Water Resource Management Department's Watershed Division, and the public education and outreach program is managed by the Water Resource Management Department.

When the City of Auburn began its Phase II program, coordination and implementation of the individual stormwater management program was the responsibility of the City's Public Works Department. In October 2005, management of the City's stormwater program was moved from the Public Works Department to the City's Water Resource Management Department, under a newly created division, the Watershed Division. The intent of the move was to manage water supply, treatment and distribution, wastewater collection, treatment and disposal and stormwater quality from a watershed perspective focusing on a water quality approach, for all components that impact the watershed.

The person responsible for the coordination and implementation of the individual storm water management program components is as follows:

B. Scott Cummings, P.E., Director  
City of Auburn  
Water Resource Management Department  
1501 West Samford Avenue  
Auburn, AL 36832  
(334) 501-3061  
scummings@auburnalabama.org



---

## **V. STORM WATER MANAGEMENT PROGRAM COMPONENTS**

The Phase II storm water regulations require operators of small municipal separate storm sewer systems (MS4s) in urbanized areas to develop and implement storm water management programs employing best management practices (BMPs) to adequately address the six minimum control measures. The control measures include:

- Public Education and Outreach
- Public Involvement/Participation
- Illicit Discharge Detection and Elimination
- Construction Site Storm Runoff Control
- Post-Construction Storm Water Management
- Pollution Prevention/Good Housekeeping for Municipal Operations

In March 2003, the City of Auburn submitted to ADEM a notice of intent (NOI) to implement a storm water management program under the Phase II storm water regulations. The goals of the individual components of the program and implementation dates were outlined in this document. At the end of permit year three, all program components outlined in the NOI have been implemented.

---

## VI. PUBLIC EDUCATION AND OUTREACH ON STORM WATER IMPACTS

### A. *Articles in the City News Letter Open Line: (March 2005 – Present)*

*Open Line* is the City's monthly newsletter mailed to Auburn citizens through their utility bill. Articles and messages contained in the newsletter reach a large and diverse group of citizens. The goal for articles in the City newsletter was to produce two (2) articles per year. During the third permit year a total of eight (8) articles were published. Storm water issues highlighted over the past year include:



- *Auburn City Fest 2005 (April 2005)*
- *Ongoing Utility Mapping and Aerial Photography Projects (April 2005)*
- *Household Hazardous Waste Collection Day (April 2005)*
- *Earth Week 2005 (April 2005)*
- *Reporting Erosion and Sediment Control Issues (May 2005)*
- *Planning a Renovation (May 2005)*
- *Trash Amnesty Week (May 2005)*
- *City introduces Internet Mapping Site (September 2005)*

### B. *Brochure Publications: (January 2005 – Present)*

Pamphlets and brochures are an effective way to present and explain storm water issues. Unlike other communication vehicles, pamphlets and brochures can be distributed in many locations without requiring staffing and the location of distribution can specifically target the audience you are trying to reach. The goal outlined in the City's NOI was to produce two (2) brochures per year. During the third permit year a total of six (6) were published. Brochures provided by the City over the past year include:

Organization Specific Brochures Published:

- Alternative Stormwater Treatment Technologies
- Stormwater Related Websites



---

### Clean Water Partnership Brochures Published

- Washing Car
- Changing Oil
- Pets
- Fertilizing



### C. Web Site: (March 2005 – Present)



The City's website is a place where citizens often go to obtain information on items of local interest. The web page is accessible 24 hours per day and can serve citizens that do not have the time or the ability to physically meet with staff during normal working hours.

In the NOI submitted to ADEM in March of 2003, the goal was to develop a Phase II Storm Water section on the existing web site in 2003 and post that web page in 2004. This goal was met a year early when the Phase II Storm Water web page was posted in March 2003. City storm water policies, ordinances, design manuals and links to related sites (ADEM and EPA) have been posted and are available to the public.

The City's Storm Water website was recently moved from the City's Public Works Department home page to the City's Water Resource Management Department home page. This was done in conjunction with the shift of management of the City's Storm Water program from the Public Works Department to the Water Resource Management Department.

For more information on the web site please visit:

<http://www.auburnalabama.org/water/phase2stormwater.html>

### D. Video Presentations/Webcasts: (March 2005 – Present)

Periodically, the City obtains relevant storm water information in video/internet format. The videos are presented to local interest groups and also made available for loan upon request. Videos are typically provided by ADEM, LEGACY, and other non-profit organizations. Webcasts based on stormwater related topics are often



---

hosted by the City. Video/internet media provided by the City over the past year include:

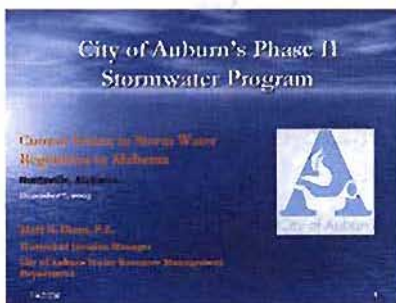
- *Low Impact Development Webcast, Water Environment Federation, August 2005*
- *The ABC of TMDLs for stakeholders, Water Environment Federation, September 2005*

**E. Public Presentations:**

The City provides staff and/or resources to develop presentation materials for public meetings. Typically presentations are offered in Power Point format and the topics are chosen by the organization requesting the information.

Six presentations were made during the third permit year. Presentations were given at various workshops and to various groups, including City Planning Commission, the League of Women Voters, and local contractors, engineers, and developers.

Presentations prepared and provided by City staff over the past year include:



- City of Auburn Illicit Discharge Program, “Watersheds, Nonpoint Source pollution and Stormwater” workshop, Mobile, AL (June 2005).
- Proposed Changes to the Stream Buffer Requirements, City of Auburn Planning Commission Subcommittee (December 2005)
- City of Auburn’s Phase II Stormwater Program, “Current Issues in Storm Water Regulation in Alabama “ Workshop, Huntsville, AL (December 2005)
- City of Auburn’s Erosion and Sediment Control Workshop, Local contractors, developers and engineers (December 2005)
- City of Auburn Stormwater Management Program, Save Our Saugahatchee (February 2006)
- City of Auburn Water Resource Management Department, We Are Water Quality, League of Women Voters (January 2006)

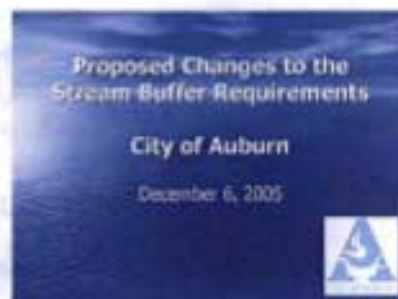


---

## ***F. Workshops Hosted:***

In an effort to educate contractors, developers, engineers, and staff, the City initiated a series of workshops. The content of the workshops focused on local storm water issues of concern. Workshops hosted by the City over the past year include:

- City of Auburn proposed Stream Buffer Changes Meeting (December 6, 2005) – The City of Auburn conducted a public meeting in which members of the Planning Commission, City personnel, local engineers, contractors, developers and concerned citizens met to discuss proposed changes to the City’s stream buffer requirements. The City currently requires a 25-foot, non-disturbed buffer on all blue-line streams located in the City. The proposed changes include a 3-zone managed use buffer with increased buffer width based on the drainage basin size of the stream. This new ordinance is currently being considered and expected to be adopted in the Spring 2006.
- Erosion and Sediment Control Workshop (December 14, 2005) – The City of Auburn hosted its fourth annual Erosion and Sediment Control Workshop on December 14, 2005. The purpose of the Workshop is to educate and interact with local engineers, developers and contractors who are governed by the City’s Erosion and Sediment Control Ordinance and the Alabama Department of Environmental Management’s (ADEM) stormwater regulations. Erosion Pros, LLC. gave a presentation on the Qualified Credentialed Professional (QCP)/Qualified Credentialed Inspector (QCI) construction site inspection process in addition to typical problems that inspectors are encountering as a result of poor or improper maintenance of erosion and sediment control best management practices (BMPs). City of Auburn personnel gave an overview of the City’s Erosion and Sediment Control Inspection program as well as typical BMP maintenance issues. Davies Erosion Control Services, Inc. and Erosion Control and Environmental Supply, Inc. provided exhibits of proper BMP installation practices as well as new technologies in the erosion and sediment control industry. Over 70 developers, contractors, and engineers attended the workshop.



- 
- Process of developing zoning ordinance and subdivision regulations for a conservation subdivision (January 2006 – present) – These proposed regulations would be primarily applicable in the Lake Ogletree watershed for protecting the water quality of our source water supply; however, use of the conservation subdivision would be available in other areas as well.

### ***G. Composting & Recycling Center/Compost Demonstration Site***

The City of Auburn has been operating a curbside recycling program since 1998. In addition to curbside recycling, the City maintains a drop-off center for recyclables. The *RecycleAuburn* Drop-Off Center is located across from the Fleet Services Complex at 365-A North Donahue Drive. These operations allow citizens of Auburn to recycle their waste instead of disposing of it in the landfill.

In addition, the City maintains a Compost Demonstration Site that serves as an example of how homeowners can easily incorporate a home composition operation into a normal backyard setting. The site features six backyard compost units. The units range from a simple pile to a concrete bin.



The exhibits take the public through the process of how to compost and recycle materials for garden use and encourage these practices. For more information on recycling of waste, please visit:

<http://www.auburnalabama.org/esd/esd.html>

### ***H. Stream Side Class Room Initiative: (April 2005)***



In an effort to educate and raise awareness in our community about the need to protect local streams, the City of Auburn, *ALOA* (citizen storm water advisory committee), *Save Our Saugahatchee (S.O.S.)*, and Auburn City Schools joined together to provide stream side classroom activities.

Students from local middle schools combined classroom instruction with hands on field activities to conduct water chemistry and biological assessment of a local stream.

The program, geared to sixth graders, focused on providing the students with a background in the type of habitat expected to sustain a healthy stream. The students conducted a chemical analysis of the stream and compared the results with that of a

---

biological assessment of the same stream. Approximately 80 children participated in the event over a two-day period.



---

## VII. PUBLIC INVOLVEMENT/PARTICIPATION

### A. *Citizens Advisory Committee:*

Both EPA and ADEM recommend that the public be included in developing, implementing, and reviewing, storm water management programs through the establishment of a citizens advisory committee. Communities that allow citizens representing diverse backgrounds and interests to participate in such a committee are far more likely to gain community support through implementation.



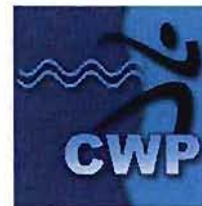
**ALO A CITIZEN STORM WATER ADVISORY COMMITTEE** (2001-present) - **ALO A** is a Citizen Advisory Committee that serves Auburn, Lee County, Opelika, and Auburn University. It meets on a quarterly basis to review and provide public input to current policies, brochure content, educational material, and proposed ordinances.

In 2005, the ALO A citizen advisory committee produced two brochures. The two brochures produced contained information on *Alternative Stormwater Treatment Technologies* and *Stormwater Related Websites*. These brochures are made available to the citizens of Auburn and can be obtained at City Hall, the City's Development Services Building, or by contacting the Watershed Division of the Water Resource Management Department at (334) 501-3074.

### B. *Watershed Organizations:*

Regional watershed organizations bring together representatives from utilities, private industry, environmental awareness groups, farmers, and branches of government to coordinate individual efforts, share information, and plan for water resource and aquatic life protection. The regional approach allows participating entities to coordinate individual efforts in order to maximize limited resources.

**LOWER TALLAPOOSA RIVER BASIN/CLEAN WATER PARTNERSHIP** (2001-present) The City of Auburn actively participates in the Lower Tallapoosa Clean Water partnership and on technical sub-committees to assist and guide the development of a watershed management plan. The organization meets on a quarterly basis. In 2005, as a



member of the Clean Water Partnership, the City of Auburn assisted in the development of the Tallapoosa River Basin Watershed Management Plan. A copy of the final plan can be downloaded from the Clean Water Partnership's website.



---

**SAUGAHATCHEE WATERSHED MANAGEMENT PLAN GROUP (SWAMP)** (February 2004 – present) Over the course of the past year, the City of Auburn has actively participated in the SWAMP group along with other stakeholders in the Saugahatchee Creek watershed to develop a watershed management plan for this watershed that encompasses parts of Lee, Macon and Tallapoosa counties. The stakeholder group is made up of representatives from the Cities of Auburn and Opelika, WestPoint Stevens Inc., MeadWestvaco Inc., Save Our Saugahatchee (S.O.S.), the Natural Resources Conservation Service (NRCS), the Alabama Cooperative Extension Service (ACES), the Lower Tallapoosa CWP, and Auburn University. The Plan was finalized and submitted to the ADEM in March 2005. In conjunction with the Plan, the SWAMP group created a 20-page educational publication on the Saugahatchee Watershed that is available to the public. The SWAMP group is actively working on an implementation grant application to submit to the ADEM for implementing measures outlined in the Plan.

**C. City of Auburn Earth Week 2005: (April 11-17)**

The City of Auburn expanded its annual Earth Day celebration to a full week of activities in 2003. The theme for Earth Week 2005 was once again "PEACE, LOVE AND GREEN, Keep Auburn Clean!". The week began with activities for local Auburn city school children at the City's public library. The week was rounded out with a Boy Scout stream clean up of urban streams and a Household Hazardous Waste Collection Day. Additional activities were designed to raise environmental awareness and to provide all age groups in the community the opportunity to participate. Earth Week activities included:



- Household Hazardous Waste Collection Day
- Earth Week Family Fun Run
- Children's Art Exhibit featuring the birds of Alabama
- Library Puppet Show
- Recycling and Animal Care Workshop
- Educational Activities for 2nd Graders (NRCS-Enviroscape model, Auburn Water Board Wastewater-flocculation experiment, Auburn Animal Control-equipment exhibit, etc.)
- Performance by the Auburn Junior High



- 
- School Jazz Band
  - Boy Scout Creek Clean-up

**D. Web Site hot line:**



In an effort to provide the general public with an additional means of reporting discharges to storm sewers, the City launched the “On-Line Hot Line” in March 2003. Citizens now have the ability to log on to the web site 24 hours per day and provide information on suspected discharges. The information is forwarded to the Water Resource Management Department and an investigation is initiated. The website hot line has proven to be a valuable tool over the course of the past two years by assisting City personnel in responding to citizens concerns.

For more information on reporting discharges please visit:

<http://www.auburnalabama.org/water/phase2stormwater.html>

**E. Arbor Day Tree Give Away: (February 2005, December 2005)**

The planting of trees improves water quality by reducing storm water runoff and erosion. Trees allow more recharging of the ground water supply and facilitate nutrient removal from the environment. In celebration of Alabama’s Arbor Day and to encourage the reforestation of the City’s urban landscape, the City’s Tree Commission sponsors a tree giveaway. The Commission gave away 800 Dogwoods and 400 cherry bark oaks in celebration of this past year’s Arbor Day. The City also gave away 100 Nuttall Oaks and 1000 Redbuds at this year’s Christmas parade.

**F. City of Auburn Citizen Survey: (April 2005)**

The citizen survey is an annual telephone/mail survey of a statistical cross section of randomly selected members of the community. The survey asks questions on issues of governmental performance and community priorities. The survey is a way of encouraging citizens to participate in local government. In 2005, the survey contained at least 10 questions that directly impacted storm water quality issues. The questions covered issues such as storm drainage system efficiencies, trash collection, yard waste disposal, recycling, natural resource protection, green space initiatives, and future growth planning. As it relates to stormwater management, approximately



---

13% of those surveyed were very satisfied, and 44% were satisfied with the City's quality of performance in this area.

To view the Citizen survey please visit:

<http://www.auburnalabama.org/citizensurvey/default.htm>

***G. Newspaper Articles: (March 2005-Present)***

Newspaper articles covering local storm water/environmental issues are one of the most effective means for disseminating information to a large and diverse group of residents most directly impacted by these issues. Informative articles provide the reader with an independent point of view. The reader is not forced to rely on information generated by a single source (i.e. City through the news letter *Open Line* or brochures).

The City of Auburn is fortunate to have a daily publication. The Opelika-Auburn News is a regional daily newspaper that covers local events and is widely read by residents of Lee County. Approximately forty (40) articles and editorials were published in the last year that directly dealt with storm water/environmental issues. A listing of articles and publication dates is included in Appendix C of this report.

***H. Greenspace/Greenway Master Plan (December 2003)***

The Auburn Greenspace Advisory Board (GAB) was created by a City Council resolution in 2002. Its objective was to identify potential areas for future property acquisitions for parks, recreation facility projects, and greenways. Once identified, these properties could be purchased and/or protected from development.

In 2003, the GAB recommended a Greenspace/Greenway Master Plan for the City of Auburn. It was adopted in December of 2003 by the City Council and has been utilized by the Planning Commission in connection with approval of projects. The GAB recently revised the initial Plan to include a vast expansion of the proposed greenspace/greenway areas. This first addition to the Greenspace/Greenway Master Plan was adopted by the City Council in October 2004.

This plan has resulted in the acquisition/protection of approximately 250-300 acres of property located in environmentally sensitive areas. The greenspace/greenway areas proposed include proposed bikeways and trails along existing and new roads and along waterways in the City of Auburn growth boundary. Areas along waterways may be improved with natural trails and will be developed by the dedication of conservation easements in developments or the acquisition of property by the City of Auburn. The properties have been set aside for future uses by the City as

---

recommended by the GAB. A copy of the current Greenspace/Greenway Master Plan is included in Appendix D of this report.

### ***I. Future Land Use Plan***

Due to the rapid development and increase in population within the City of Auburn, City personnel and Auburn citizens have developed a Land Use Plan for future development and growth within the City. The Land Use Plan that was developed and adopted by the City Council focuses on a *City of Villages* concept. This Plan focuses on the concept that natural resource conservation is critical to our quality of life as a part of community planning and development. The plan establishes that residential growth should focus on true neighborhoods that are part of larger “villages”. Villages will contain vital elements to citizens such as grocery stores, retail stores, green spaces, etc. In addition, open green spaces will be linked and tied in to the system of trails and greenspace areas created by the City’s Greenspace/Greenway Master Plan.

The Plan places a strong emphasis on maintaining and enhancing natural resources within the City of Auburn such as streams, greenspaces, etc. By concentrating populations within these village centers, less automobile traffic is required, impacts on natural resources are lessened, and other adverse environmental effects decrease. The Plan establishes the idea that development should be strategically placed away from our most critical resources. New ordinances based on the Land Use Plan began to be developed in 2005.

### ***J. Lee County Water Festival (May 2005)***

On May 12<sup>th</sup>-13<sup>th</sup>, 2005, the second annual Lee County Water Festival was held on the campus of Auburn University. Approximately 1,500 fourth graders from schools in the Lee County area attended the two-day event. The primary purpose of the event is to educate young people on the importance of our water resources and the role each of us play in conserving our water. During the event, students learned about water filtration, aquifers and the water cycle through hands-on activities such as building an edible aquifer, making a water cycle bracelet and building a mini-filtration unit. Volunteers from the City of Auburn, the City of Opelika and other local groups helped make last year’s event a huge success. Planning is currently underway for the 2006 Water Festival, scheduled for May 11-12 at Auburn University.





---

*K. Conservation Easements (2005 – present)*

The City of Auburn actively participates in funding the Land Trust of East Alabama, a local subsidiary of the Alabama Land Trust. In December 2005/January 2006, the Land Trust acquired its first conservation easement. The easement consists of 100-acres of undeveloped property located in Auburn. The purpose of the easement is to preserve the natural habitat of the property by prohibiting development. The land owner who grants the easement remains the property owner and can still pursue agriculture and forestry on the land, but gives up development rights on the property.

---

## VIII. ILLICIT DISCHARGE DETECTION AND ELIMINATION

### A. *Storm Sewer Map*

The City of Auburn completed the initial mapping of its storm water system in 2003. The mapping is maintained in a Geographical Information Systems Database (GIS). The drainage area was divided into quarter section maps with a scale of 1"=100'. Detail information on pipe size, pipe material, direction of flow, inlets, manholes, bridges, box culverts, detention ponds, and headwalls are provided on the maps. Public Works maintains a plat book containing approximately 200 maps (36"x36"). In 2005, the City hired a consultant who's currently performing a system-wide comprehensive GIS update of the City's infrastructure system, including the City's stormwater system as well as water and wastewater infrastructure. When the update is completed in 2006, the City will have much more accurate GIS data on its storm water conveyance system.



*Note: GIS files are updated on a regular basis as new work is added or as old work is modified to current standards. Latest revision to maps can be obtained through the Public Works Department located at 171 North Ross Street.*

### B. *Illicit Discharge Ordinance: (January 2004)*

The Environmental Protection Agency (EPA) recommends municipalities implement an ordinance that provides the means to identify and enforce correction of illicit discharges.

In our NOI, submitted to ADEM in March of 2003, the stated goal was to develop and implement an Illicit Discharge Ordinance by December 2005. This goal was met two years ahead of schedule.



A draft copy of the Illicit Discharge Ordinance was reviewed by the *ALOA* Citizens Advisory Committee in November of 2003. A revised draft was forwarded to City Attorney and Municipal Judge for review in December of 2003. Auburn City Council adopted the Illicit Discharge Ordinance on January 20, 2004.

---

The City of Auburn has responded to several cases of illicit discharges over the past year. These cases involved illicit discharges of diesel fuel, paint and leaves being dumped in a storm drain. In each instance, the illicit discharge was traced back to its source and the violator was given a warning and notified of the City's Illicit Discharge Ordinance. The proper regulatory agencies were notified of the issue and proper cleanup was conducted.

***C. Public Education on Illicit Discharges & Improper Disposal: (March 2003 – present)***

The Alabama Clean Water Partnership, in association with ADEM and other environmental groups, has produced a series of public service announcements featuring the "Nerdy Man". The City of Auburn has obtained materials for distribution from the Clean Water Partnership and provides them to the public free of charge through its information centers located at City Hall, the Bailey-Alexander Water and Sewer Complex and the Development Services Building. These materials can also be obtained by contacting the City's Watershed Division at 334-501-3074. The City also routinely places articles in the City newsletter, *Open Line*, to educate citizens on illicit discharges.

***D. Inspection of Drainage System: (2003-present)***

The City Public Works Department conducts an annual inspection of its drainage system in order to maintain free flowing conditions. During this process, key stream sections, bridges, and culverts are inspected and routine maintenance is conducted. As areas are identified for maintenance, the work is listed on the maintenance schedule and a crew is assigned to perform the task.

***E. Detention Pond Inspections: (1997-present)***

Existing detention ponds need periodic inspections to maintain proper operation. Because vast quantities of storm water are collected and passed through these detention ponds every year, inspections of these facilities can identify potential problems and illicit discharges.



The Public Works Department conducts annual inspections of all detention ponds (public and private) listed in its storm water inventory. Upon inspection, the owner of the pond is notified of corrective action needed. Approximately one hundred and eighty (180) detention ponds are currently being inspected (January 2006 – February 2006).



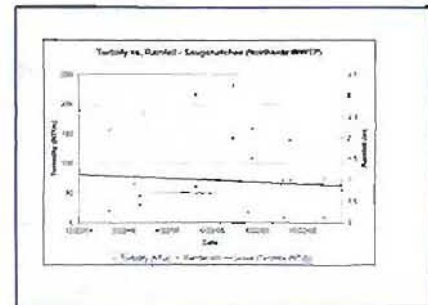
---

### ***F. Hazardous Waste Emergency Response Team***

The City of Auburn has entered into an agreement with the City of Opelika to share some of the cost of operating an emergency response vehicle equipped to handle hazardous waste spills. The agreement provides the City of Auburn with the ability to properly identify and address hazardous or potentially hazardous spills (see NOI submittal Appendix B).

### ***G. Water Sampling Program (2004-present)***

In 2004, the City of Auburn began a water-sampling program in an effort to analyze the effectiveness of stormwater BMPs on active construction sites within the City. City of Auburn personnel are currently collecting water samples from Moores Mill Creek, Saugahatchee Creek and Parkersons Mill Creek. These samples are tested for stream turbidity. This data provides us with an indicator of the effectiveness of construction site BMPs. When excessive increases occur downstream from a development, the City works with the developer to enhance measures to minimize the transport of sediment from the site. The City is currently investigating the possibility of testing for other water quality parameters such as total suspended solids, dissolved oxygen, etc.



---

## **IX. CONSTRUCTION SITE STORM WATER RUNOFF CONTROL**

### ***A. Erosion and Sediment Control Ordinance (July 2002-present):***

The City of Auburn, in conjunction with the City of Opelika and Auburn University, adopted the Erosion and Sediment Control Policy recommended by the Citizens Advisory Committee (ALOA). The policy provides for a regional set of rules that can be applied to contractors, developers and engineers in the area.

In December 2004, the Auburn City Council approved additions to the City's Erosion and Sediment Control Ordinance to establish protocol for enforcement of the Ordinance and to enable City personnel to issue citations to developers/contractors in violation of the Ordinance. The City has issued 5 citations since the enforcement measures went into effect. The enforcement mechanisms have proven to be a valuable tool in insuring compliance with the Ordinance.

### ***B. Erosion Control Checklist (January 2003-present):***

The City of Auburn, in an effort to control erosion and minimize sedimentation originating from active construction sites, initiated a construction site inspection program in 2003. The inspection program is designed to identify deficiencies in erosion control and initiate corrective action. Nearly 300 site inspections were performed from March 2005 through March 2006. The City of Auburn revised its Erosion Control Checklist form in December 2004. In 2005, the City of Auburn's GIS department, with input from the Watershed Division and Public Works Department, created a Construction Site database where information from each inspection is entered. The database is integrated with the City's GIS system. Information such as the location of construction sites, permit information, and historical inspection data can be obtained from the database. The City's Water Resource Management Department maintains copies of the inspection reports.



### ***C. Erosion Control Residential (January 2003-present):***

The City of Auburn Codes and Enforcement Department conducts an initial site inspection for all building construction in Auburn. Lots requesting the initial inspection must have a construction entrance in place prior to authorizing foundation construction. Deficiencies noted during the initial inspection are relayed to the building permit applicant for correction.

---

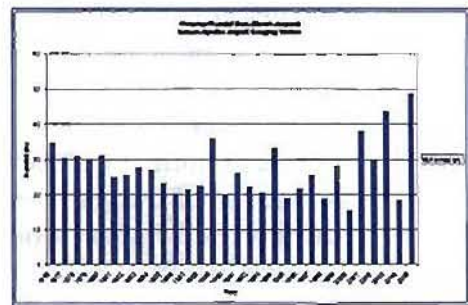
In August 2003, the City of Auburn Codes and Enforcement Department began maintaining a database of complaints received associated with erosion resulting from residential construction. The complaints are routed to enforcement officers who investigate the complaint and pursue corrective actions with responsible parties.

***D. Added Elements to Erosion and Sediment Control(December 2004-present)***

In an effort to utilize the latest in erosion and sediment control technology, the City of Auburn has begun recommending that engineers consider the use of polyacrylamide (PAM) and other flocculants on certain developments within the City of Auburn. PAM is essentially a soil stabilization BMP. Flocculants work to settle out solids from turbid water and aid in stabilizing soils to support grass seed so that a suitable vegetative buffer may be established. The City is currently evaluating the effectiveness of these BMPs and will consider requiring on erosion and sediment control plans submitted to the City if deemed successful.

***E. Rainfall Data Collection (2005-Present)***

In 2005, the City began maintaining historical rainfall data records. The data is obtained through a subscription to the Agricultural Weather Information System (AWIS) website. AWIS records daily weather data from the NOAA weather station at the Auburn-Opelika airport. The City collects the data each day and enters it into an Excel spreadsheet, enabling the City to analyze rainfall patterns and trends. The City has AWIS data dating back to 1976.





---

## **X. POST-CONSTRUCTION STORM WATER MANAGEMENT IN NEW DEVELOPMENT AND REDEVELOPMENT**

### ***A. Storm Water Management Manual (April 2003):***



In April 2003, the City of Auburn published an Engineering Design Manual that effectively addresses storm water runoff controls required for sites greater than one acre. The manual identifies project requirements and specifications for new infrastructure. The manual also addresses the requirement for storm water system sizing and storm water runoff control/detention. During its first two years of implementation, the manual has proven to be a very successful tool for the City and

developers.

### ***B. Buffer Zones (July 2002)***

As part of the Erosion and Sediment Control Ordinance adopted by the City Council in July 2002, a minimum 25 foot vegetative buffer zone is currently required for new developments on "blue line" streams and creeks identified on USGS 7.5 minute topographic maps. The City is currently in the process of revising its buffer ordinance. The new buffer requirements will be based on a managed use, 3-zone buffer, with buffer width based on the stream's drainage basin size. This new ordinance is currently being considered and is expected to be adopted in spring 2006.

### ***C. Detention Pond Inspections (1997-present)***

Existing detention ponds need periodic inspections to maintain proper operation. Because vast quantities of storm water are collected and passed through these detention ponds every year, inspections of these facilities can identify potential problems and illicit discharges.

The Public Works Department conducts annual inspections of all detention ponds (public and private) listed in the storm water inventory. Upon inspection, the owner of the pond is notified of any corrective action needed. Approximately one hundred and eighty (180) detention ponds are currently being inspected (January 2006-February 2006).

### ***D. Right-of-Way Vegetation Program (2003-present)***

Proper repair and maintenance of existing rights-of-way provide a significant benefit to storm



---

water quality. The City initiated a program to establish vegetative cover (grass, trees, shrubs, or wildflowers) on rights-of-way where vegetation had previously failed to be established. Since 2003 approximately 5 acres of right-of-way has been grassed in various sections of the city.

---

## **XI. POLLUTION PREVENTION/GOOD HOUSEKEEPING FOR MUNICIPAL OPERATIONS**

### ***A. Construction Site Management Training (March 2005-present):***

The City of Auburn continues to develop a training program that provides the Water Resource Management Department and other city departments with information on the proper methods for implementing site control measures on all municipal projects (see Public Education and Outreach on Storm Water Impacts). City personnel also attend a variety of stormwater/water quality related workshops/seminars.

Training opportunities included:

- **Storm Water BMP Academy and Advanced Storm Water Design (March 8-9, 2005)** – This workshop was held in Montgomery and provided attendees with an overview of storm water Best Management Practices (BMPs), including storm water wetlands, bioretention, and permeable pavement. One full day was devoted to an overview of these practices while the second day was devoted to in-depth design of these practices. Two (2) City personnel attended the workshop.
- **State of Our Watershed Conference (May 5-6, 2005)** – This 2-day workshop at Camp ASCCA focused on the current state of the Tallapoosa River Basin watershed, of which the City of Auburn is a part. Presentations were given on current water quality in the watershed as well as ongoing efforts to protect the watershed's water quality. One (1) City personnel attended the conference.
- **Watersheds, Nonpoint Source Pollution and Storm Water Workshop (June 22, 2005)** – This 2-day seminar was held at the Weeks Bay Reserve in Mobile, Alabama. The City of Auburn gave a presentation on its illicit discharge program. Various presentations were given on the relationship between nonpoint source pollution and water quality. One (1) City personnel attended the workshop.
- **Low Impact Development Webcast (August 4, 2005)** – This 2-hour webcast, sponsored by the Water Environment Federation, provided an overview of Low Impact Development (LID) principles. Storm water LID principles were discussed in the presentation. Approximately Ten (10) City personnel attended the webcast.
- **The ABCs of TMDLs for Stakeholders (September 28, 2005)** – This 2-hour webcast, sponsored by the United States Environmental Protection Agency,



---

gave an overview of the TMDL process, including definitions, how TMDLs are established, and the establishment of waste load allocations (WLAs). Approximately eight (8) City personnel attended the webcast.

- **WEFTEC 2005 (10/30/05 – 11/2/05)** – This 4-day conference, sponsored by the Water Environment Federation, is one of the premier water quality conferences in the world. This year's conference was held in Washington, D.C. City personnel attended technical sessions related to watershed protection, water quality, storm water BMPs, wastewater treatment, etc. Three (3) City personnel attended last year's conference.
- **Erosion and Sediment Control Workshop (December 14, 2005)** – The City of Auburn hosted a workshop for developers, contractors, and engineers to discuss the City's Erosion and Sediment Control Ordinance. Over seventy (70) developers, contractors and City personnel attended the workshop.

***B. Spill Response and Prevention Training (2004 – present):***

As outlined in the NOI, the City of Auburn is currently in the process of developing an in-house spill response training program. The program will be targeted to employees that work on a day-to-day basis with fuels (i.e. Construction Maintenance workers). Training sessions are planned for 2006.

***C. Risk Management Manual (March 2005 – present):***

The City of Auburn Human Resources Department has developed a manual outlining specific requirements/policies for dealing with hazardous chemicals. Topic 12 (titled *Hazard Communication Program*) of the City's Risk Management Manual specifically requires City personnel to inventory, label, and receive training on hazardous chemicals identified. Material Safety Data Sheets (MSDS) identifying personal protective equipment, permissible exposure limits (PEL), and Threshold Limit Values (TVL) are required for all hazardous chemicals identified during the inventory process. The Hazard Communication Program was adopted as part of the Risk Management Manual in January 2004.

***D. Municipal Operations Recycling (1998-present):***

It has been standard policy to require individual Departments to participate in the City's recycling program. Recyclable waste generated through City activities is collected and processed through the City's recycling center located on Donahue Drive.

---

### ***E. Street Sweeping***

The City of Auburn operates a street sweeping program designed to keep litter from entering the storm drainage system. The streets in the City are divided into four (4) grids. The grids are swept on a weekly basis with the entire route completed at the end of a 4 week period. Not all of the streets in a grid are swept, main traffic routes, arterials, and collectors are maintained on a regular interval. Local streets or streets with low traffic volumes are swept as needed. See Appendix F for grid layout of sweeping program.

### ***F. Alabama Certified Pesticides Applicator***

The City's Parks and Recreation Department maintains trained and certified personnel in the application of pesticides, including restricted use pesticides. Although qualified to do so, the Parks and Recreation Department has not employed any restricted use pesticides in the previous decade. In order to maintain certification with the state of Alabama, the staff must document and complete 30 continuing education units (CEUs) over a three-year period. CEUs are earned at various conferences and workshops such as the Alabama Turfgrass Conference, Alabama Highway Department workshops, Sports Turf Short Course, and the Alabama Urban Forestry Association's Annual Conference. The CEUs cover not only the application of pesticides, they also provide information on the proper use of fertilizers and other chemicals typically used to maintain athletic fields.

Currently, the City has two (2) Alabama Certified Pesticide Applicators on staff.

---

## **XII. STORM WATER INFRASTRUCTURE IMPROVEMENTS**

In 2005, the City of Auburn's Public Works Department continued to make considerable progress toward completing a priority listing of storm water improvement projects outlined in the City's Storm Water Master Plan (2000).

### ***A. Storm Water Infrastructure Projects Completed (January 2005-present)***

Projects completed in permit year three include:

- Gay Street/City Hall Drainage Project – Project included the installation of approximately 400 linear feet of storm pipe and improvements to an existing junction box (Completed 10/05).
- Thach Avenue Pipe Replacement Project – Project involved replacement of 100 linear feet of collapsed storm pipe (Completed 11/05).
- Teague Court Project – Project included the installation of several junction boxes and completion of existing storm sewer system for our Economic Development Department (Completed 11/05).
- East Lane Drainage Project – Project included the installation of approximately 180 linear feet of 18" storm pipe and 300 linear feet of 24" storm pipe along with an area inlet and associated junction boxes to solve an existing residential flooding issue (Completed 2/06).
- CDBG Bibb Avenue Drainage Improvement Project – Project included the installation of approximately 300 feet of 36" storm pipe and 18" storm pipe along with an area inlet and associated junction boxes to solve an existing residential flooding issue (Completed 2/06).

### ***B. Storm Water Infrastructure Projects Under Construction***

Projects currently under construction include:

- Tucker/Foster Drainage Improvement Project

### ***C. Storm Water Infrastructure Projects Under Design and Consideration:***

- Cook Street Drainage Improvements Project
- Country Circle Drainage Improvements Project
- Samford Regional Detention Pond



- 
- Streambank and Wetland Restoration and Mitigation Feasibility for Lake Wilmore Property
  - Storm pipe replacement project at Samford Avenue and Dean Road

---

### **XIII. PROGRAM EVALUATION**

The assessment of the third permit year of the City of Auburn's Storm Water Management Program continues to be a positive impact on storm water management in the City. The goals outlined in the City's Notice of Intent have been achieved.

The City of Auburn has tightened requirements of its construction storm water management program by empowering staff to issue citations and otherwise stop work in the case where BMPs are not implemented or deemed deficient. The City has implemented a water sampling program that allows us to analyze the effectiveness of storm water Best Management Practices (BMPs) on active construction sites, as well as enabling us to examine our local streams from a water quality perspective. The City has continued to invest staff time and money into the continuing education and outreach and public involvement associated with the Storm Water Management Program. The City has met or exceeded its goals this year.

The overall evaluation of the third permit year has revealed several strengths and weaknesses in the program.

#### ***A. Strengths***

Identified strengths of the program include formation of the watershed division to manage the City's stormwater program, increased enforcement of erosion and sediment control requirements, active local environmental groups, concerned citizens, and proactive City management.

- As mentioned earlier in the report, the City recently moved management of its storm water program from the City's Public Works Department to the City's Water Resource Management Department. The storm water program was placed under a newly created Division called the Watershed Division. The intent in making this change was for the City to begin moving in a direction where a watershed approach to water quality is considered. The new division allows the City to analyze the various components affecting our watersheds from a water quality perspective (i.e. stormwater, wastewater, water). By placing the storm water program under the Watershed Division, it allows the City to have staff devoted to managing various components of its stormwater program, from public education and outreach to increased enforcement of the City's Erosion and Sediment Control requirements.
- The construction storm water management program has been enhanced by the Auburn City Council passing an ordinance to increase the staff's ability to issue citations to those violating the erosion and sediment control ordinance. The City has increased its presence in the inspection and enforcement of erosion and

---

sediment control measures on construction sites. The result has been positive, as more sites are implementing measures to minimize erosion and sediment control in a more timely manner. By increasing its inspection presence, the City has been able to take a proactive, rather than reactive, approach to erosion and sediment control.

- As indicated in our Year One and Year Two Reports, local environmental awareness groups such as Alabama Water Watch, Save our Saugahatchee (S.O.S.), Friends of Chewacla, and the Lower Tallapoosa Stake Holders Committee provide tremendous amounts of encouragement for environmental projects. The groups provide a network of qualified professionals that can be called upon to assist in the analysis of problems and the development of solutions. Some of the groups conduct much needed water analysis that can establish base line conditions and predict trends. This network will continue to develop the City's program into a strong tool to manage storm water issues. Two examples of environmental projects completed over the past year through working with local environmental groups, are the development of the Saugahatchee Watershed Management Plan (SWaMP) and the Lower Tallapoosa River Basin Watershed Management Plan.
- As mentioned in our Year Two Report, the City has developed a means through the Internet, e-mail, and phone to receive calls on issues and offer a quick response to calls concerning storm water management and erosion and sediment control. Citizens play a key role in the City's Erosion and Sediment Control program by providing knowledge of problems that might otherwise go unnoticed.
- As indicated in the Year One and Year Two Reports, City management continues to be proactive in establishing a community in which residents can participate in guiding future growth. Community participation on future land use planning and annual surveys are just a few of the many ways in which the storm water program directly benefits from a proactive City government.

#### ***B. Weaknesses***

While great improvements have been observed in the past year, weaknesses in the storm water management program continue to surface in: education, funding, enforcement, and interdepartmental coordination.

- Proper education and training of the construction community is the prime weakness in the current system. Construction contractors have not yet mastered the proper installation and maintenance of BMPs, nor the understanding of the value of these measures. The City has taken some significant measures to bridge the gap with several educational opportunities as documented in this report in



---

addition to providing more time up front in plan review and pre-construction meetings. Many contractors and developers understand the value of good erosion and sediment control. Several have required that their workers acquire QCI certification. The developer, engineer, and contractor team needs to work together in a more concerted effort to provide the technical oversight, proper implementation, and proper inspection and maintenance of construction BMPs.

- Funding of the Phase II Storm Water Regulation requirements has been an issue since the rule went into effect. Without proper funding, future implementation of required components (i.e. monitoring) cannot be accomplished.
- Enforcement of newly implemented rules, regulations, and ordinances has continued to improve. Informing the building community of rule changes and new ordinances will also continue for the next few years. Although gradual improvement in compliance has been documented, non-compliant sites requiring enforcement actions, such as citations or stop work orders, continue. This issue is expected to improve over time similar to that documented by Phase I cities that have been dealing with the issue for years.
- The City continues to educate staff from all departments concerning the Storm Water Management program. We have improved our integrated effort to monitor the City's storm water system and especially erosion and sediment control. The City continues to meet with inspection staff periodically and develop simplistic means to assist our staff in supporting the City's Program.

---

**APPENDIX A**

**ALABAMA NOTICE OF INTENT (ALNOI)**

---

---

City of Auburn

**Alabama Notice of Intent (ALNOI)**

General permit for Phase II Small Municipal Separate Storm Sewer Systems (MS4)

March 2003

---



# TABLE OF CONTENTS

---

<b>I.</b>	<b>General Information:</b> .....	<b>1</b>
<b>II.</b>	<b>Location/Boundaries:</b> .....	<b>1</b>
<b>III.</b>	<b>Known or Suspected Water Quality Problems:</b> .....	<b>2</b>
<b>IV.</b>	<b>Sharing Responsibility</b> .....	<b>2</b>
<b>V.</b>	<b>Minimum Control Measures:</b> .....	<b>3</b>
<b>VI.</b>	<b>Certification Statement</b> .....	<b>3</b>

**Appendix A - Public Education and Outreach on Storm Water Impacts**

**Appendix B - Public Involvement/Participation**

**Appendix C - Illicit Discharge Detection and Elimination**

**Appendix D - Construction Site Storm Water Runoff Control**

**Appendix E - Post-construction Storm Water Management in**

**New Development and Redevelopment**

**Appendix F - Pollution Prevention/Good Housekeeping for Municipal Operations**

**Appendix G - City of Auburn Location Map**

**Appendix H - Lee County Emergency Operations Plan**

**Emergency Support Function #10 Hazardous Materials**

**Appendix I - Master Drainage Map & Quarter Section Map Example**

**Appendix J - ALOA Erosion and Sediment Control Policy**

**Appendix K - City of Auburn Storm Water Management Manual**

**STATE OF ALABAMA DEPARTMENT OF ENVIRONMENTAL MANAGEMENT**

**ALABAMA NOTICE OF INTENT (ALNOI)**

General Permit for Phase II Small Municipal Separate Storm Sewer Systems (MS4)

**I. General Information:**

**A. Ownership Status (Please check one):**

- Small Municipal Separate Storm Sewer System  
 Federal Facility  
 State Facility

**B. Name of Small MS4: *The City of Auburn***

**C. Name of Responsible Official: *Bill Ham, Jr.***

Title: ***Mayor***

Mailing Address: ***144 Tichenor Avenue***

City: ***Auburn*** State: ***AL*** Zip Code: ***36832***

Telephone Number: ***(334) 501 - 7260***

**D. Designated storm water management program contact:**

Name: ***Tim Logiotatos***

Title: ***Assistant City Engineer/Environmental***

Mailing Address: ***171 North Ross Street***

City: ***Auburn*** State: ***AL*** Zip Code: ***36832***

Telephone Number: ***(334) 501 - 3000***

Email Address: ***tlogiotatos@auburnalabama.org***

**II. Location/Boundaries:**

**A. Location:**

1. Name of Urbanized Area or municipality where your MS4 is located:

***Auburn, AL***

2. Name of your

Organization: ***The City of Auburn***

3. The latitude and longitude of the approximate center of your MS4:

Latitude ***764440.25***

Longitude ***766458.96***

**Note:** *Approximate center of MS4 is the intersection of Magnolia Avenue and College Street. Latitude and Longitude are in State Plane Coordinate System.*

4. All entities except counties must include a location map showing city, town, or district boundaries, and urbanized area (UA) boundaries, if part(s) of the MS4 is within a UA.

**See Appendix G**

5. Counties must include a map showing county boundaries, unincorporated area boundaries within the county, and urbanized (UA) boundaries.

**III. Known or Suspected Water Quality Problems:**

- A. The names(s) of the receiving water to which your MS4 discharges (attach a separate list if necessary):

***The City of Auburn discharges into Sogauhatchee Creek (North), Moores Mill Creek (south East), Chewacla Creek (south) and Parkersons Mill Creek (South West).***

- B. Indicate any receiving water stream segments to which your MS4 discharges, which are included on the 303(d) list:

***Moores Mill Creek was placed on the draft 303(d) list in 1998 and was listed on the final 2002 303(d) list.***

- C. Describe any known or suspected water quality concerns within your jurisdictional area (e.g. stream siltation, 303(d) listed streams, habitat degradation, elevated levels of pollutants, etc.), including location (attach additional page(s) if necessary):

***Stream siltation and sedimentation derived from development are the known water quality concerns within the jurisdictional area.***

**IV. Sharing Responsibility**

- A. Has another entity agreed to implement a control measure on your behalf?  
Yes  No  (if no, Skip to Part III)

**Control Measure #1: *Illicit Discharge Detection and Elimination***

1. Name of entity: ***The City of Opelika***
2. Control measure or component of control measure to be implemented by entity on your behalf:

***The City of Auburn has entered into an agreement with the City of Opelika to share some of the cost of operating an emergency response vehicle equipped to handle hazardous waste spills. The agreement provides the City of Auburn with the ability to properly***



***identify and address hazardous or potentially hazardous spills (see Appendix H).***

B. Attach an additional page if necessary to list additional shared responsibilities.

**It is mandatory that you submit a copy of a written agreement between your MS4 and the other entity demonstrating written acceptance of responsibility.**

**V. Minimum Control Measures:**

- A. Public Education and Outreach – (complete Appendix A)
- B. Public Involvement/Participation – (complete Appendix B)
- C. Illicit Discharge Detection and Elimination – (complete Appendix C)
- D. Construction Site Storm Water Runoff Control – (refer to Appendix D)
- E. Post-construction Storm Water Management in New Development and Redevelopment – (complete Appendix E)
- F. Pollution Prevention/Good Housekeeping – (complete Appendix F)

**VI. Certification Statement**

I certify under penalty of law that this document and all attachments were prepared under my direction or supervision in accordance with a system designed to assure that qualified personnel properly gathered and evaluated the information submitted. Based upon my inquiry of the person or persons who manage the system, or those persons directly responsible for gathering the information, the information submitted is, to the best of my knowledge and belief, true, accurate and complete. I am aware that there are significant penalties for submitting false information, including the possibility of fine and imprisonment for knowing violations.

Printed Name: \_\_\_\_\_ Date \_\_\_\_\_  
Signature: \_\_\_\_\_ Title \_\_\_\_\_

## Appendix A

### Public Education and Outreach on Storm Water Impacts

40 CFR Part 122.34(b)(1) Requirement: You must implement a public education program to distribute educational materials to the community or conduct equivalent outreach activities about the impacts of storm water discharges on water bodies and the steps that the public can take to reduce pollutants in storm water runoff.

#### **A. Best Management Practice (BMP) # 1: Messages/Articles in City News Letter "Open Line"**

1. Known or suspected problem/existing pollutant source to be addressed by BMP: **Storm Water Runoff**
2. Target audience: **Citizens**
3. Description of BMP: **Messages/Articles in the City News Letter "Open Line"**
4. Measurable Goal(s): **Two Messages/Articles per year for duration of permit period**
5. Schedule:
  - a. Interim Milestone Dates (if applicable)
  - b. Implementation Date: **2003**
  - c. Frequency of actions: **Bi-annual**
  - d. Month/Year of each action (if applicable)
6. Person (position) responsible for overall management and implementation of the BMP: **Tim Logiotatos/Public Works Department**
7. Rational for selecting this BMP:

**"Open Line" is the City's news letter that is sent out through the utility bill. No other publication is as widely read within the City Limits and an article or message in this document will reach the most diverse group of citizens.**

**B. Best Management Practice (BMP) # 2: Pamphlets/Brochures**

1. Known or suspected problem/existing pollutant source to be addressed by BMP: ***Storm Water Runoff/Quality***
2. Target audience: ***Citizens, Contractors, Developers, and Engineers***
3. Description of BMP: ***Pamphlets and Brochures***
4. Measurable Goal(s): ***Develop, Produce, and Distribute two Pamphlets/Brochures per year for duration of Permit Period***
5. Schedule:
  - a. Interim Milestone Dates (if applicable)
  - b. Implementation Date: ***2003***
  - c. Frequency of actions: ***Bi-annual***
  - d. Month/Year of each action (if applicable)
6. Person (position) responsible for overall management and implementation of the BMP: ***Tim Logiotatos/Public Works Department***
7. Rational for selecting this BMP:

***Pamphlets and brochures are an effective way to present and explain a storm water message. Unlike other communication vehicles, pamphlets and brochures can be distributed in many places without requiring staffing and the location of distribution can specifically target the audience you are trying to reach (i.e. Development Services Building/Office of Codes and Enforcement).***



**C. Best Management Practice (BMP) # 3: Internet Web Page**

1. Known or suspected problem/existing pollutant source to be addressed by BMP: **Storm Water Construction Runoff/Storm Water Quality**
2. Target audience: **Community**
3. Description of BMP: **Municipal Web Page**
4. Measurable Goal(s): **Develop and post web page containing storm water information and links.**
5. Schedule:
  - a. Interim Milestone Dates: **Develop Web Page 2003**
  - b. Implementation Date: **Post Web Page 2004**
  - c. Frequency of actions: (if applicable)
  - d. Month/Year of each action (if applicable)
6. Person (position) responsible for overall management and implementation of the BMP: **Tim Logiotatos/Public Works Department**
7. Rational for selecting this BMP:

***The City's web page is a place where citizens often go to obtain information on local events. A section of the web page can be modified to target various audiences (contractors, engineers, local interest groups, etc.). It also allows the City to link to existing web sites (i.e. ADEM and EPA) for the latest educational information provided by these agencies for our use.***

**Note: The MS4 is not limited to implementing only 2 BMPs for each minimum control measure. If additional BMPs are chosen, then you should attach additional sheets as needed.**

## Appendix B

### Public Involvement/Participation

40 CFR Part 122.34(b)(2) Requirement: You must, at a minimum, comply with State, Tribal, and local public notice requirements when implementing a public involvement/participation program.

**A. Best Management Practice (BMP) # 1: Formation of a Citizens Advisory Committee**

1. Known or suspected problem/existing pollutant source to be addressed by BMP: ***Storm Water Runoff/Quality***
2. Target audience: ***Community***
3. Description of BMP: ***Formation of a Citizens Advisory Committee***
4. Measurable Goal(s): ***Organize a regional Citizens Advisory Committee representing various segments of the community to offer recommendations to facilitate implementation of the Storm Water Management Program. Regional representatives include members City of Auburn, Lee County, City of Opelika, and Auburn University.***
5. Schedule:
  - a. Interim Milestone Dates (if applicable)
  - b. Implementation Date: ***The ALOA Citizens Advisory Committee was organized in 2001. It is comprised of various segments of the community including local environmental interest groups.***
  - c. Frequency of actions: ***The ALOA Citizens Advisory Committee meets on a quarterly basis.***
  - d. Month/Year of each action: ***The ALOA Citizens Advisory Committee is scheduled to meet on a quarterly basis for the duration of the permit period (5 years).***
6. Person (position) responsible for overall management and implementation of the BMP: ***All members of ALOA (City of Auburn, Lee County, City of Opelika, and Auburn University) are committed to fostering and maintaining the organization.***
7. Rational for selecting this BMP: ***EPA and ADEM recommend that the public be included in developing, implementing, and reviewing storm water management***

**programs. This committee allows individuals to participate in the discussions regarding program implementation. The committee also has direct input into policy implementation for regional storm water issues.**

**B. Best Management Practice (BMP) # 2: Watershed Organization “Lower Tallapoosa River Basin/Clean Water Partnership”**

1. Known or suspected problem/existing pollutant source to be addressed by BMP: **Storm Water Runoff/ Quality**
2. Target audience: **Community**
3. Description of BMP: **The partnership is part of a state-wide river basin management initiative to link local basin management efforts in order to maximize resources, to develop comprehensive management plans, and to involve citizens in watershed protection.**
4. Measurable Goal(s): **Coordinate with the Clean Water Partnership to develop a watershed management plan. Work with the Clean Water Partnership’s and ADEM’s Education/Outreach initiative to improve awareness of water quality issues.**
5. Schedule:
  - a. Interim Milestone Dates (if applicable)
  - b. Implementation Date: **The City of Auburn is currently a participant on the Lower Tallapoosa Technical Committee.**
  - c. Frequency of actions: **Meetings are held on a quarterly basis.**
  - d. Month/Year of each action (if applicable)
6. Person (position) responsible for overall management and implementation of the BMP: **Tim Logiotatos/Public Works Department**
7. Rational for selecting this BMP:  
**The Partnership brings together representatives from utilities, private industries, environmental groups, farmers, and branches of government to coordinate their individual efforts, share information, and plan for water resource and aquatic life protection. This organization allows for the group to maximize resources available and to involve the public in protecting the environment.**

**Note: The MS4 is not limited to implementing only 2 BMPs for each minimum control measure. If additional BMPs are chosen, then you should attach additional sheets as needed.**



## Appendix C

### Illicit Discharge Detection and Elimination

40 CFR Part 122.34(b)(3) Requirement: You must develop, implement and enforce a program to detect and eliminate illicit discharges into you small MS4. You must:

- A). Develop, if not already completed, a storm sewer system map, showing the location of all outfalls and the names and location of all waters of the state that receive discharges from those outfalls;
- B). Effectively prohibit, through ordinance, or other regulatory mechanism, non-storm water discharges into your storm sewer system and implement appropriate enforcement procedures and actions;
- C). Develop and implement a plan to detect and address non-storm water discharges, including illegal dumping, to your system; and
- D). Inform public employees, businesses, and the general public of hazards associated with illegal discharges and improper disposal of waste.

#### **A. Storm Sewer Map**

1. Does the MS4 have a completed storm sewer map showing the location of all outfalls and the names and locations of all waters of the State that receive discharges from those outfalls? Yes  X  No  \_\_\_
2. If yes submit storm sewer system map as an addendum to this form.

***The City of Auburn has mapped its storm water system in a Geographical Information Systems Database (GIS). The attached 27" x 36" drainage map is a hard copy depiction of the entire system and its outfalls. Detail information on pipe size, pipe material, direction of flow, inlets, manholes, bridges, box culverts, detention ponds, and headwalls are provided on quarter section maps. Quarter section maps (1"=100' scale) allow the space necessary to illustrate these details without clutter. In Attachment I please find: a hard copy (27" x 36") Master Drainage Map, an example of one of the 36" x 36" quarter section maps, and the electronic files for the Master Drainage Map and all of the approximately 120 quarter section detail maps for your review.***

***Note: GIS files are updated on a daily basis as new work is added or as old work is modified to current standards. Latest revision to Maps can be obtained through the Public Works Department located at 171 North Ross Street.***

3. If the storm sewer system map must be developed, provide a schedule for completion (e.g. 30% of system to be mapped each year):

<u>Task</u>	<u>Interim Date</u>
_____	_____
_____	_____
_____	_____

Final completion date/ date for submittal to ADEM (No later than December 9, 2006): \_\_\_\_\_

**B. Ordinance/Regulatory Mechanism Evaluation:**

1. Does the MS4 have an ordinance or regulatory mechanism that effectively prohibits illicit discharges? Yes \_\_\_\_\_ No **X**

If yes, submit a copy as an addendum to this form.

2. If an evaluation of the ordinance/regulatory mechanism must be completed, or the MS4 is aware that the ordinance/regulatory mechanism will require revision, then a schedule for development of the document should be provided:

<u>Task</u>	<u>Interim Date</u>
<u><b>Review Ordinance Material</b></u>	<u><b>Dec 9 2003</b></u>
<u><b>Draft Ordinance</b></u>	<u><b>Dec 9 2004</b></u>
<u><b>Adopt Ordinance</b></u>	<u><b>Dec 9 2005</b></u>

Final completion date/ date for submittal to ADEM (No later than December 9, 2006): \_\_\_\_\_

**C. Best Management Practice (BMP) # 1: Public Education on Illicit Discharges & Improper Disposal**

1. Known or suspected problem/existing pollutant source to be addressed by BMP: **Storm Water Discharges**
2. Target audience: Citizens
3. Description of BMP: ***The Clean Water Partnership in association with ADEM and other environmental groups have produced a series of public service announcements featuring the "Nerdy Man". These spots inform the public of the do's and don'ts of proper disposal.***
4. Measurable Goal(s): ***Coordinate with Clean Water Partnership to obtain public service announcements and videos (e.g. "The Nerdy Man" videos) for public use locally.***
5. Schedule:
  - a. Interim Milestone Dates (if applicable)
  - b. Implementation Date: **Dec 9 2003**
  - c. Frequency of actions: ***Provide public access to information and materials year round***
  - d. Month/Year of each action (if applicable)
6. Person (position) responsible for overall management and implementation of the BMP: **Tim Logiotatos/ Public Works Department**
7. Rational for selecting this BMP:

***The Clean Water Partnership provides the videos and training materials in an effort to educate the public. Use of the videos and other materials allows the city to provide education that could prevent an illicit discharge ( like proper disposal of oil). The materials have been produced through the assistance of various environmental agencies and are geared toward the general public.***



**D. Best Management Practice (BMP) # 2: Inspection of Drainage System**

1. Known or suspected problem/existing pollutant source to be addressed by BMP: **Storm Water Runoff/Quality**
2. Target audience: **Public Works**
3. Description of BMP: **Inspect drainage system and outfalls**
4. Measurable Goal(s): **Inspect drainage system and outfalls prior to start of rainy season. Document illicit discharges uncovered during inspections and schedule for remediation.**
5. Schedule:
  - a. Interim Milestone Dates (if applicable)
  - b. Implementation Date: **Dec 5 2001**
  - c. Frequency of actions: **Annually**
  - d. Month/Year of each action: **November - February**
6. Person (position) responsible for overall management and implementation of the BMP: **Robert Smith/Assistant Public Works Director**
7. Rational for selecting this BMP:

**Annual inspections of the City's drainage system are conducted in order to maintain free flowing conditions. During this process, key stream sections, bridges, and culverts are inspected and routine maintenance is conducted. Routine maintenance includes repair of the structure and/or removing litter and debris that has accumulated over the preceding year. The removal and inspection of debris from these catch points can provide the City with valuable information locating, premeditating, and eliminating illicit discharges.**

**Note: The MS4 is not limited to implementing only 2 BMPs for each minimum control measure. If additional BMPs are chosen, then you should attach additional sheets as needed.**

## **Appendix D**

### **Construction Site Storm Water Runoff Control**

ADEM Admin. Code Ch. 335-6-12 implements a State-wide construction storm water regulatory program consistent with NPDES requirements for construction activities. As provided by 40 CFR Part 122.35(b), this NOI does not require an MS4 to implement a local construction storm water control program.

***The City of Auburn in conjunction with the City of Opelika and Auburn University has adopted the Erosion and Sediment Control recommended to it by the Citizens Advisory Committee (ALOA). The implementation of this regional Policy began in July 2002 (See Appendix J).***

## Appendix E

### Post-construction Storm Water Management in New Development and Redevelopment

40 CFR Part 122.34(b)(5) Requirement: You must develop, implement, and enforce a program to address storm water runoff from new development and redevelopment projects that disturb greater than or equal to one acre, including projects less than one acre that are part of a larger common plan of development or sale, that discharge into your small MS4. You must:

- A). Develop and implement strategies which include a combination of structural and/or non-structural BMPs appropriate for you community.
- B). Use an ordinance or other regulatory mechanism to address post construction runoff from new development or redevelopment projects; and
- C). Ensure adequate long-term operation and maintenance of BMPs.

#### **A. Ordinance Evaluation**

1. Does the MS4 have an ordinance that effectively controls runoff from new development or redevelopment construction site?

Yes   X              No   

If yes, submit a copy as an addendum to this form.

***The City of Auburn has developed an Engineering Design Manual that effectively addresses storm water runoff controls required for sites greater than one acre. The manual specifically addresses the requirement for storm water system sizing and storm water runoff control/detention (see Attachment K).***

2. If an evaluation of the ordinance must be completed, or the MS4 is aware that the ordinance will require revision, then a schedule for development of the document should be provided:

<u>Task</u>	<u>Interim Date</u>
_____	_____
_____	_____
_____	_____

Final completion date/ date for submittal to ADEM (No later than December 9, 2006): \_\_\_\_\_



**B. Best Management Practice (BMP) #1: Buffer Zone**

1. Known or suspected problem/existing pollutant source to be addressed by BMP: ***Storm Water Runoff/Quality***
2. Target audience: ***Citizens***
3. Description of BMP: ***25 foot minimum vegetative buffer zones***
4. Measurable Goal(s): ***Require new developments to provide buffer zones to protect "blue line" streams and creeks identified on USGS 7.5 minute topographic maps.***
5. Schedule:
  - a. Interim Milestone Dates (if applicable)
  - b. Implementation Date: ***July 2002***
  - c. Frequency of actions (if applicable)
  - d. Month/Year of each action (if applicable)
6. Person (position) responsible for overall management and implementation of the BMP: ***City of Auburn Planning Commission***
7. Rational for selecting this BMP:

***Buffer zones provide for stream bank protection by restricting the type of land disturbance in and around streams. They also allow a location for stream bank vegetation to grow providing shade and habitat for aquatic life.***

**C. Best Management Practice (BMP) # 2: Detention Pond Inspection**

1. Known or suspected problem/existing pollutant source to be addressed by BMP: Storm Water Runoff/Quality
2. Target audience: Private and Public Detention Pond Owners
3. Description of BMP: Annual inspections of exiting detention ponds.
4. Measurable Goal(s): Inspect private and public storm water detention ponds (on record with Public Works) annually
5. Schedule:
  - a. Interim Milestone Dates (if applicable)
  - b. Implementation Date: **1997**
  - c. Frequency of actions: **Annually**
  - d. Month/Year of each action: (if applicable)
6. Person (position) responsible for overall management and implementation of the BMP: **Tim Logiotatos/Public Works**
7. Rational for selecting this BMP:

***Existing detention ponds need periodic inspections to maintain proper operation. Upon inspection, the owner of the pond is notified of corrective action needed. Because vast quantities of storm water are passed through these detention ponds every year, regular inspections identify potential problems before they create major environmental damage.***

## Appendix F

### Pollution Prevention/Good Housekeeping for Municipal Operations

40 CFR Part 122.34(b)(6) Requirement: You must develop and implement an operation and maintenance program that includes training component and has the ultimate goal of preventing or reducing pollutant runoff from municipal operations.

**A. Best Management Practice (BMP) # 1: Construction Site Management Training**

1. Known or suspected problem/existing pollutant source to be addressed by BMP: **Storm Water Runoff/Quality**
2. Target audience: **Public Works Employees**
3. Description of BMP: **Construction Site Management Training**
4. Measurable Goal(s): **Develop and implement training that provides the Public Works department the guidance on how to implement site control measures on all municipal projects.**
5. Schedule:
  - a. Interim Milestone Dates (if applicable)
  - b. Implementation Date: **2003**
  - c. Frequency of actions: **Annual**
  - d. Month/Year of each action (if applicable)
6. Person (position) responsible for overall management and implementation of the BMP: **Tim Logiotatos/Public Works Department**
7. Rational for selecting this BMP:

**Providing training to employees will allow the City to better control runoff from municipal construction project sites. Training of construction design personnel will help to develop the skills necessary to choose and implement the most effective Best Management Practices (BMPs).**

**B. Best Management Practice (BMP) # 2: Spill Response and Prevention Training**

1. Known or suspected problem/existing pollutant source to be addressed by BMP: **Storm Water Runoff/Quality**
2. Target audience: **Public Works Employees**
3. Description of BMP: **Provide training to public works employees for spill response and prevention**
4. Measurable Goal(s): **Develop and implement training program targeted at spill response and prevention**
5. Schedule:
  - a. Interim Milestone Dates (if applicable)
  - b. Implementation Date: **Develop program 2003**
  - c. Frequency of actions: **Annual training starting in 2004**
  - d. Month/Year of each action: **January - March**
6. Person (position) responsible for overall management and implementation of the BMP: **Tim Logiotatos/Public Works**
7. Rational for selecting this BMP:

***Spill prevention training is targeted at public works employees. It will have the most impact when it comes to preventing and controlling spills of non-hazardous materials since the first responders to a spill are typically Public Works work crews. Hazardous materials will be addressed through our agreement with the Opelika Fire Department.***

Notes:

For the BMP used to describe the required training component of the O&M program, you should provide the name of the target audience(s). One targeted audience must be the MS4 employees.

The MS4 is not limited to implementing only 2 BMPs for each minimum control measure. If additional BMPs are chosen, then you should attach additional sheets as needed.



**Appendix G**

**City of Auburn Location Map**

**Appendix H**

**Lee County Emergency Operations Plan**  
**Emergency Support Function #10 Hazardous Materials**

**Appendix I**

**Master Drainage Map & Quarter Section Map Example**

**Appendix J**

**ALOA Erosion and Sediment Control Policy**



**Appendix K**

**City of Auburn Storm Water Management Manual**

---

## **APPENDIX B**

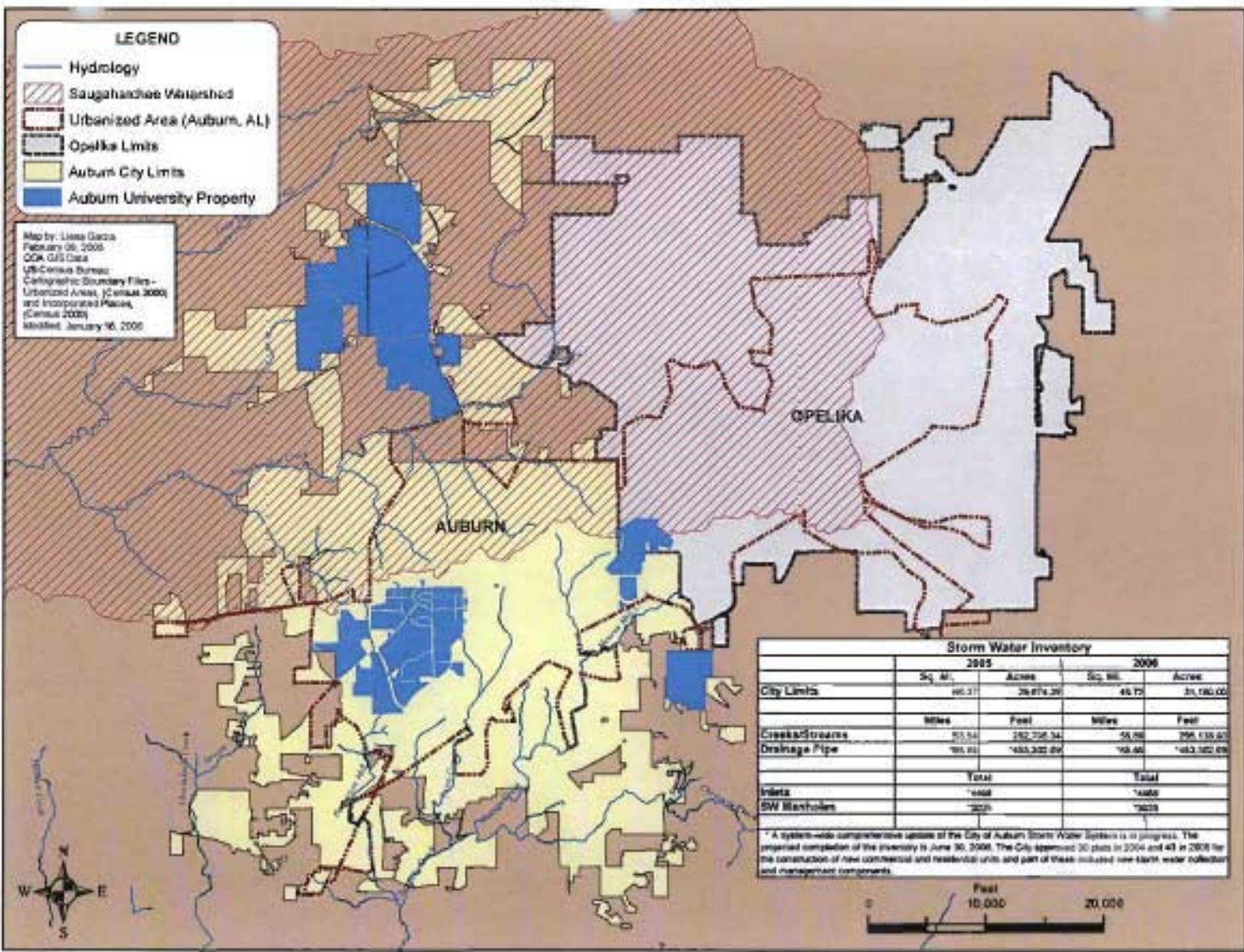
### **URBANIZED AREA MAP**

---

**LEGEND**

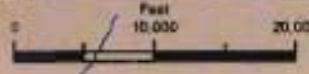
-  Hydrology
-  Saugahatchee Watershed
-  Urbanized Area (Auburn, AL)
-  Opelika Limits
-  Auburn City Limits
-  Auburn University Property

Map by: Luisa Garcia  
 February 08, 2008  
 QDA, GIS Data  
 US Census Bureau  
 Cartographic Boundary Files -  
 Urbanized Areas, (Census 2000)  
 and Incorporated Places,  
 (Census 2000)  
 Modified: January 16, 2008



	2005		2006	
	Sq. Mi.	Acres	Sq. Mi.	Acres
City Limits	46.37	28,874.20	45.75	29,186.00
	Miles	Feet	Miles	Feet
Creeks/Streams	75.54	282,756.34	55.96	295,138.67
Drainage Pipe	781.83	453,322.89	748.88	483,162.89
	Total		Total	
Inlets	1488		1488	
SW Manholes	3025		3025	

\* A system-wide comprehensive update of the City of Auburn Storm Water System is in progress. The proposed completion of the inventory is June 30, 2008. The City approved 30 plots in 2004 and 43 in 2005 for the construction of new commercial and residential units and part of these included new storm water collector and management components.



---

**APPENDIX C**

**NEWSPAPER PUBLICATIONS LISTING**

---



---

# *News Paper Publications*

<i>Publication Date by Month</i>	<i>Publication Date</i>	<i>Title</i>	<i>Editorial</i>	<i>Publication Source</i>
	9/7/2004	FRANCES ROARS THROUGH AREA	<input type="checkbox"/>	Opelika-Auburn News
	9/7/2004	LEE COUNTY COPEs WITH WIND, RAIN AS FRANCES MOVES IN	<input type="checkbox"/>	Opelika-Auburn News
	9/8/2004	FRANCES SPARES MOST OF LEE COUNTY	<input type="checkbox"/>	Opelika-Auburn News
	9/8/2004	STORM HITS SOME AREA RESIDENTS HARD	<input type="checkbox"/>	Opelika-Auburn News
	9/14/2004	AUBURN UNIVERSITY PREPARING FOR IVAN	<input type="checkbox"/>	Opelika-Auburn News
	9/14/2004	UNPREDICTABLE: COUNTY OFFICIALS PREPARE FOR THE WORST	<input type="checkbox"/>	Opelika-Auburn News
	9/18/2004	IVAN REMNANTS TURN DEADLY IN SOUTHEAST	<input type="checkbox"/>	Opelika-Auburn News
	9/22/2004	AUBURN COUNCIL HEARS REVIEW OF DAMAGES TO CITY FROM HURRICANE IVAN	<input type="checkbox"/>	Opelika-Auburn News
	9/22/2004	TRASH PICK-UP BEHIND SCHEDULE Opelika City Officials Apologize to Residents	<input type="checkbox"/>	Opelika-Auburn News
	9/23/2004	CITY HEARS RESIDENTS' THOUGHTS ON LAKE WILMORE PARK PLAN	<input type="checkbox"/>	Opelika-Auburn News
<i>October 2004</i>				
	10/13/2004	ATLANTA'S TRASH MAY STAY PUT City may pull trash deal from Waste Management	<input type="checkbox"/>	Opelika-Auburn News
	10/25/2004	COUNTY TRASHES GARBAGE PLAN Commissioners vote 5-0 to deny Salem landfill expansion	<input type="checkbox"/>	Opelika-Auburn News
	10/25/2004	WASTE MANAGEMENT: "No Host Fee"	<input type="checkbox"/>	Opelika-Auburn News
<i>November 2004</i>				
	11/3/2004	OPÉLIKA DISCUSSES URBAN FORESTRY PLANS	<input type="checkbox"/>	Opelika-Auburn News
<i>January 2005</i>				
	1/3/2005	RESIDENTS VOICE CONCERNS OVER ROADSIDE GARBAGE	<input type="checkbox"/>	Opelika-Auburn News
<i>March 2005</i>				
	3/3/2005	COUNTY DISCUSSES PAVING POLICY	<input type="checkbox"/>	OPÉLIKA-AUBURN NEWS

<i>Publication Date by Month</i>	<i>Publication Date</i>	<i>Title</i>	<i>Editorial</i>	<i>Publication Source</i>
	3/6/2005	THIRD ANNUAL BRIDGE CROSSING CLEAN-UP HELD	<input type="checkbox"/>	Opelika-Auburn News
	3/27/2005	FLOODING HITS AREA IN SECOND DAY OF STORMS	<input type="checkbox"/>	Opelika-Auburn News
<i>April 2005</i>				
	4/1/2005	EARTH WEEK 2005	<input type="checkbox"/>	Open Line
	4/1/2005	HOUSEHOLD HAZARDOUS WASTE COLLECTION DAY	<input type="checkbox"/>	Open Line
	4/1/2005	THUNDERSTORMS AND HEAVY RAINS POUND LEE COUNTY	<input type="checkbox"/>	Opelika-Auburn News
	4/1/2005	AUBURN CITY FEST 2005	<input type="checkbox"/>	Open Line
	4/1/2005	ONGOING UTILITY MAPPING AND AERIAL PHOTOGRAPHY PROJECTS	<input type="checkbox"/>	Open Line
<i>May 2005</i>				
	5/20/2005	MUDDY WATERS CUT THE LANDSCAPE	<input checked="" type="checkbox"/>	Opelika-Auburn News
<i>June 2005</i>				
	6/10/2005	ARLENE TO BRING WEEKEND RAIN	<input type="checkbox"/>	Opelika-Auburn News
	6/11/2005	ARLENE EXPECTED TO HIT LAND TODAY	<input type="checkbox"/>	Opelika-Auburn News
	6/12/2005	ARLENE MAKES LANDFALL BRINGING LOCAL SHOWERS, WIND	<input type="checkbox"/>	Opelika-Auburn News
<i>July 2005</i>				
	7/10/2005	DENNIS BEGINS POUNDING ALABAMA-FLORIDA COAST	<input type="checkbox"/>	OPELIKA-AUBURN NEWS
	7/11/2005	DENNIS THE MENACE	<input type="checkbox"/>	OPELIKA-AUBURN NEWS
	7/11/2005	RED CROSS SHELTERS PROVIDE SAFE HAVEN	<input type="checkbox"/>	OPELIKA-AUBURN NEWS
	7/11/2005	GULF COAST AVOIDS WIDESPREAD DAMAGE FROM DENNIS	<input type="checkbox"/>	OPELIKA-AUBURN NEWS
	7/11/2005	GAS PRICES SOAR AS DENNIS HITS THE COAST	<input type="checkbox"/>	OPELIKA-AUBURN NEWS

*August 2005*

<i>Publication Date by Month</i>	<i>Publication Date</i>	<i>Title</i>	<i>Editorial</i>	<i>Publication Source</i>
	8/10/2005	AUBURN COUNCIL CONSIDERS MAJOR BUDGET CHANGES	<input type="checkbox"/>	Opelika-Auburn News
	8/11/2005	CITIZENS SHOULD SPEAK OUT, FIND WAYS TO HELP LEADERS SOLVE COMMUNITY ISSUES	<input checked="" type="checkbox"/>	Opelika-Auburn News
	8/15/2005	COLLABORATION FOR 'BETTER, CLEANER ENVIRONMENT' SOMETHING TO BE PROUD OF	<input checked="" type="checkbox"/>	Opelika-Auburn News
	8/21/2005	PROJECT PROGRESS Rain slows Auburn bridge construction	<input type="checkbox"/>	Opelika-Auburn News
	8/28/2005	NEW ORLEANS FLEES FROM KATRINA	<input type="checkbox"/>	Opelika-Auburn News
	8/29/2005	KATRINA PLOWS INTO GULF COAST	<input type="checkbox"/>	Opelika-Auburn News
	8/30/2005	KAT-ASTROPHIC	<input type="checkbox"/>	Opelika-Auburn News
	8/31/2005	THE DAY AFTER Severe Weather's Wrath Wrecks Reeltown	<input type="checkbox"/>	Opelika-Auburn News
	8/31/2005	KATRINA'S VICTIMS FIND REFUGE IN OPELIKA First Baptist Provides Red Cross Shelter For Evacuees	<input type="checkbox"/>	Opelika-Auburn News
<i>September 2005</i>				
	9/1/2005	CITY INTRODUCES INTERNET MAPPING SITE	<input type="checkbox"/>	Open Line
	9/2/2005	KATRINA HITS HOME	<input type="checkbox"/>	Opelika-Auburn News
	9/7/2005	FORECASTERS' WARNINGS SHOULD HAVE BEEN HEEDED	<input checked="" type="checkbox"/>	Opelika-Auburn News
	9/7/2005	HURRICANE JUST AS DESTRUCTIVE AS TERRORISTS, AND THEY'RE PREDICTABLE	<input checked="" type="checkbox"/>	Opelika-Auburn News
	9/9/2005	WATERSHEDS, WETLANDS AND STORMS	<input checked="" type="checkbox"/>	Opelika-Auburn News
	9/16/2005	FISHING RULES PROPOSED FOR SAUGAHATCHEE LAKE	<input type="checkbox"/>	Opelika-Auburn News
	9/20/2005	HELPING MOTHER EARTH	<input type="checkbox"/>	Opelika-Auburn News
	9/29/2005	WATER HAZARDS SOAK CAMPUS	<input type="checkbox"/>	The Plainsman
	9/29/2005	COUNTY PRIMED FOR MAJOR GROWTH	<input checked="" type="checkbox"/>	Opelika-Auburn News

*October 2005*

<i>Publication Date by Month</i>	<i>Publication Date</i>	<i>Title</i>	<i>Editorial</i>	<i>Publication Source</i>
	10/16/2005	STATE'S RIVERS IN FAST DECLINE	<input type="checkbox"/>	MONTGOMERY ADVERTISER
	10/20/2005	Auburn, Piedmont Conservation Groups Join Forces	<input type="checkbox"/>	Opelika-Auburn News
<i>January 2006</i>				
	1/4/2006	AUBURN 2006	<input type="checkbox"/>	Opelika-Auburn News
	1/4/2006	WATKINS: GROWTH SHOWS NO SIGNS OF SLOWING DOWN	<input type="checkbox"/>	Opelika-Auburn News
	1/8/2006	A GIFT OF THE DEVELOPMENT RIGHTS	<input type="checkbox"/>	Opelika-Auburn News
	1/10/2006	CITY MUST ADOPT HIGHER ENVIRONMENTAL STANDARDS OR EVERYONE WILL PAY FOR IT	<input checked="" type="checkbox"/>	Opelika-Auburn News
	1/13/2006	ORDINANCE THAT CONTAINS STRONG WATER PROTECTION STANDARDS IS NEEDED	<input checked="" type="checkbox"/>	Opelika-Auburn News
<i>February 2006</i>				
	2/17/2006	TREES FREE TO PUBLIC FOR ARBOR DAY IN AUBURN	<input type="checkbox"/>	Opelika-Auburn News
	2/21/2006	TAKING ROOT: Local Tree Specialists Give Tips on Planting	<input type="checkbox"/>	Opelika-Auburn News

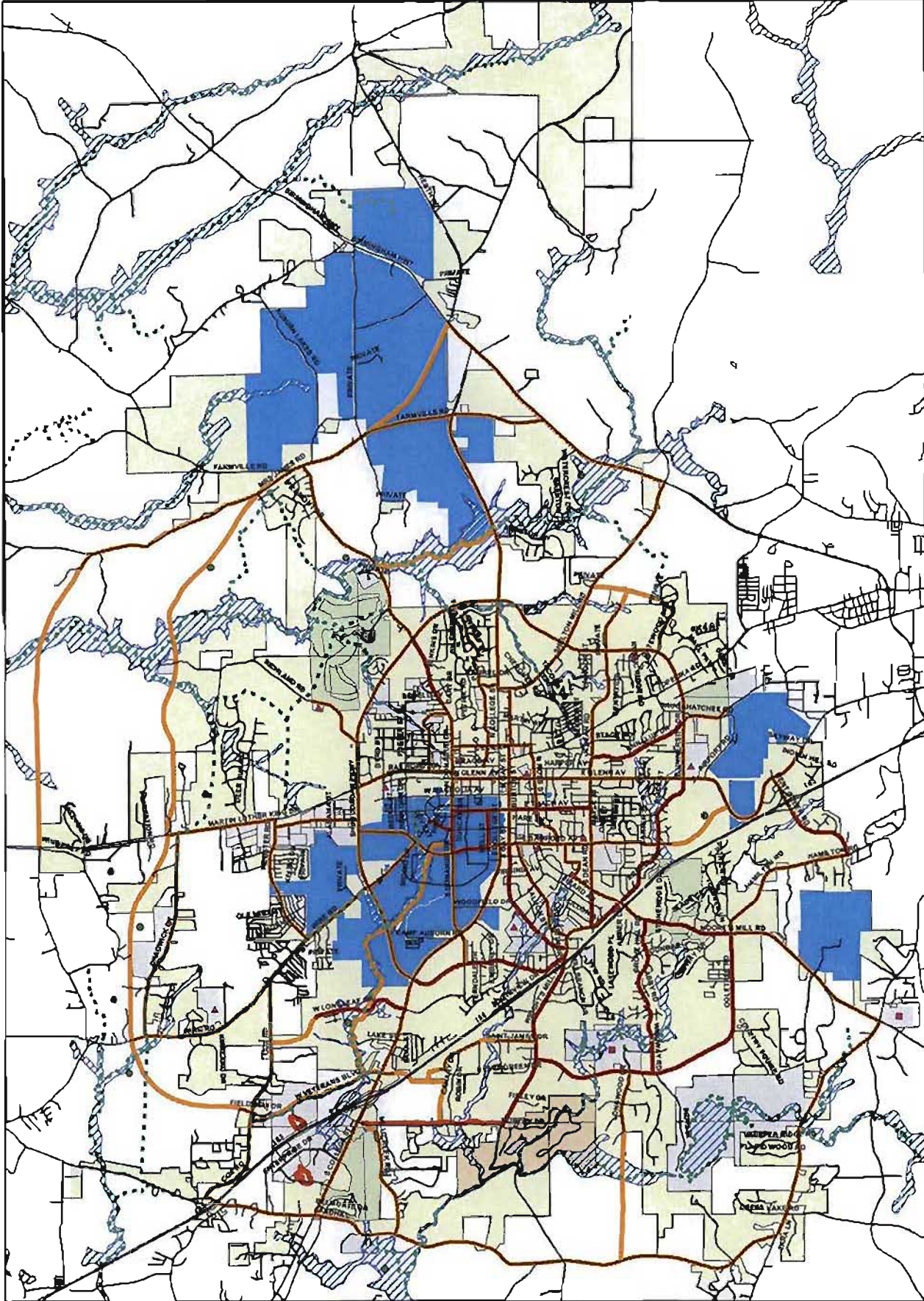


---

## **APPENDIX D**

### **GREEN SPACE AND GREEN WAY MASTER PLAN**

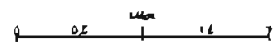
---



- LEGEND**
- Landmark
  - - - Greenway
  - ▲ Park
  - Future Park
  - Sewer
  - BluePath
  - Existing
  - Proposed
  - ▨ Flood Plain
  - City Property
  - City Courthouse
  - Cherokee State Park
  - Auburn University Property
  - City Limits
  - City Courthouse

**City of Auburn  
Green Space and Green Way  
Master Plan**

2006



Map Date: 2006/04  
 By: Linn County  
 Project Name: Green Space and Green Way Master Plan  
 Scale: 1" = 1/2 Mile

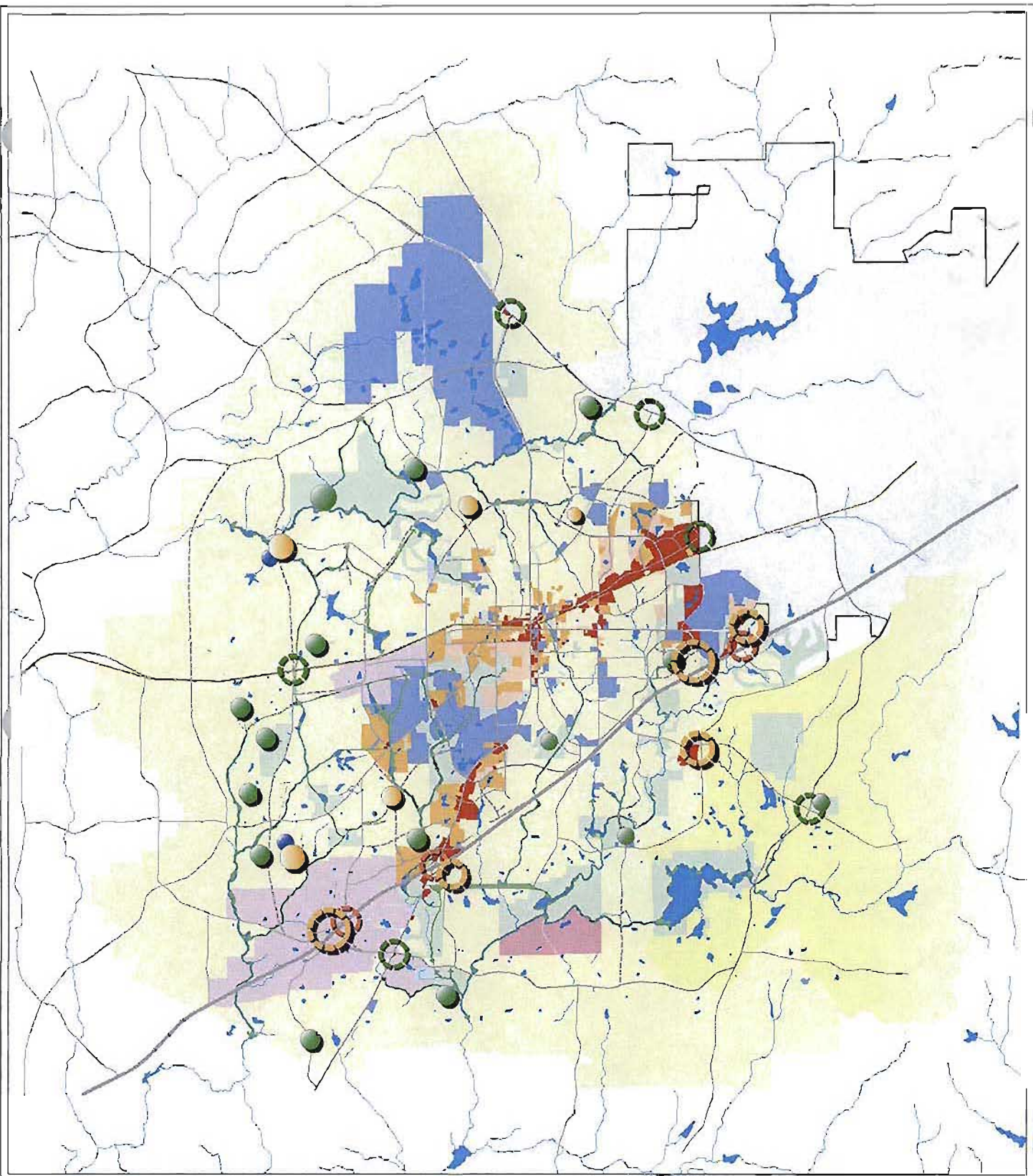
---

**APPENDIX E**

**FUTURE LAND USE PLAN**

---





Future Land Use Plan  
AUBURN, ALABAMA



K|P|S  
AUBURN

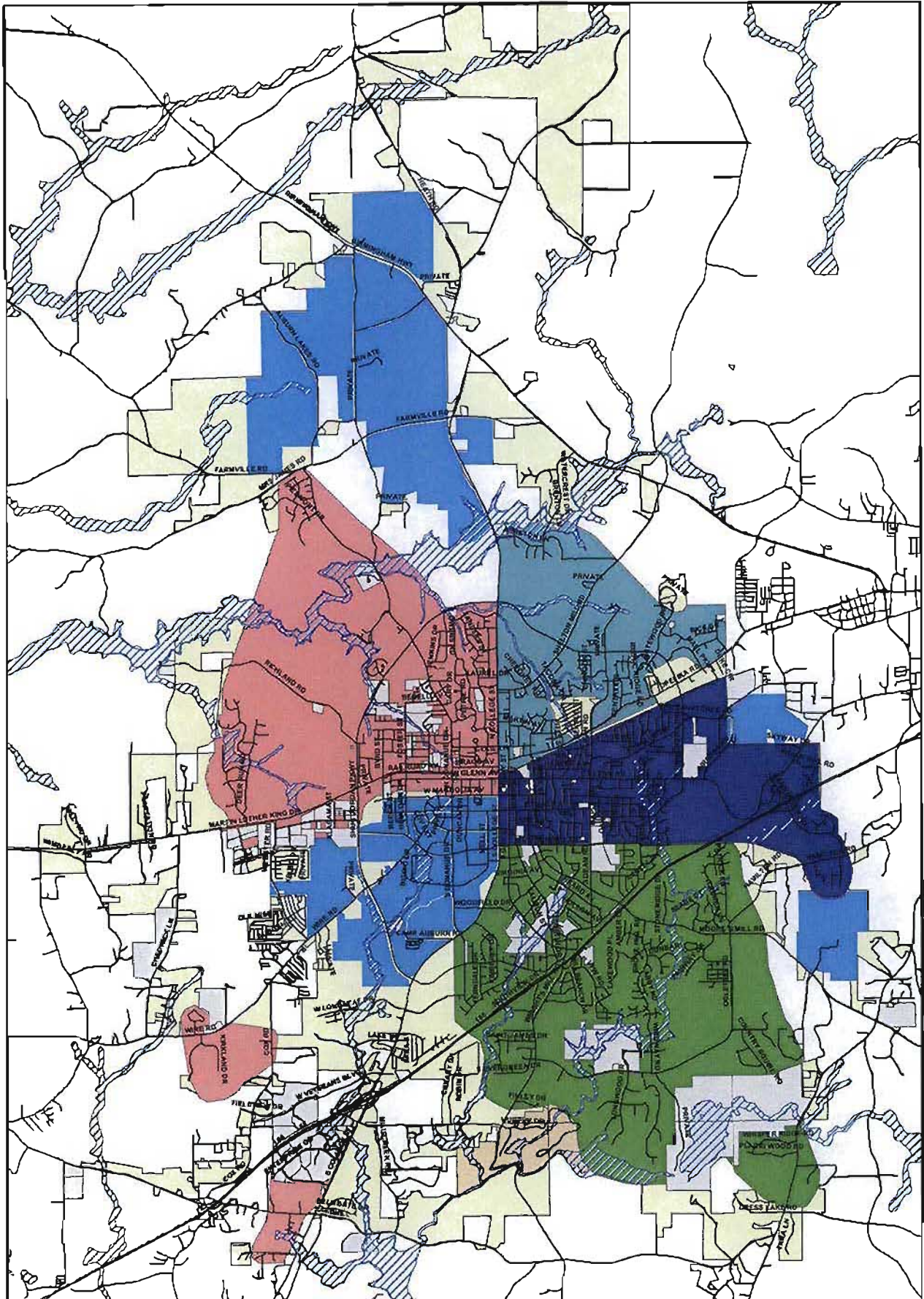
LEGEND

- |  |   |  |
|--|---|--|
|  OFFICE                   |  INDUSTRIAL                    |  MINOR GATEWAY            |
|  COMMERCIAL MIXED USE     |  EXTRACTION                    |  MAJOR GATEWAY            |
|  LARGE LOT RESIDENTIAL    |  UTILITY                       |  PROPOSED ACTIVITY CENTER |
|  RESIDENTIAL              |  PARKS, RECREATION             |  PROPOSED ACTIVITY CENTER |
|  HIGH DENSITY RESIDENTIAL |  GREENWAY                      |  PROPOSED SCHOOLS         |
|  INSTITUTIONAL/ CIVIC     |  PROPOSED ROADWAY IMPROVEMENTS |  PROPOSED PARKS           |

# **APPENDIX F**

## **STREET SWEEPER MAP**





**LEGEND**

Street	<b>Street Sweeper</b>
Flood Plain	<b>WEEK</b>
City Property	1
Chowers Skel's Park	2
Auburn University Property	3
City Limits	4

**City of Auburn  
Street Sweeper Map**

Inches

Miles

0 0.5 1 1.5

N  
W —+— E  
S

Not to Scale  
 Date: 10/1/2010  
 Author: [illegible]  
 [illegible]